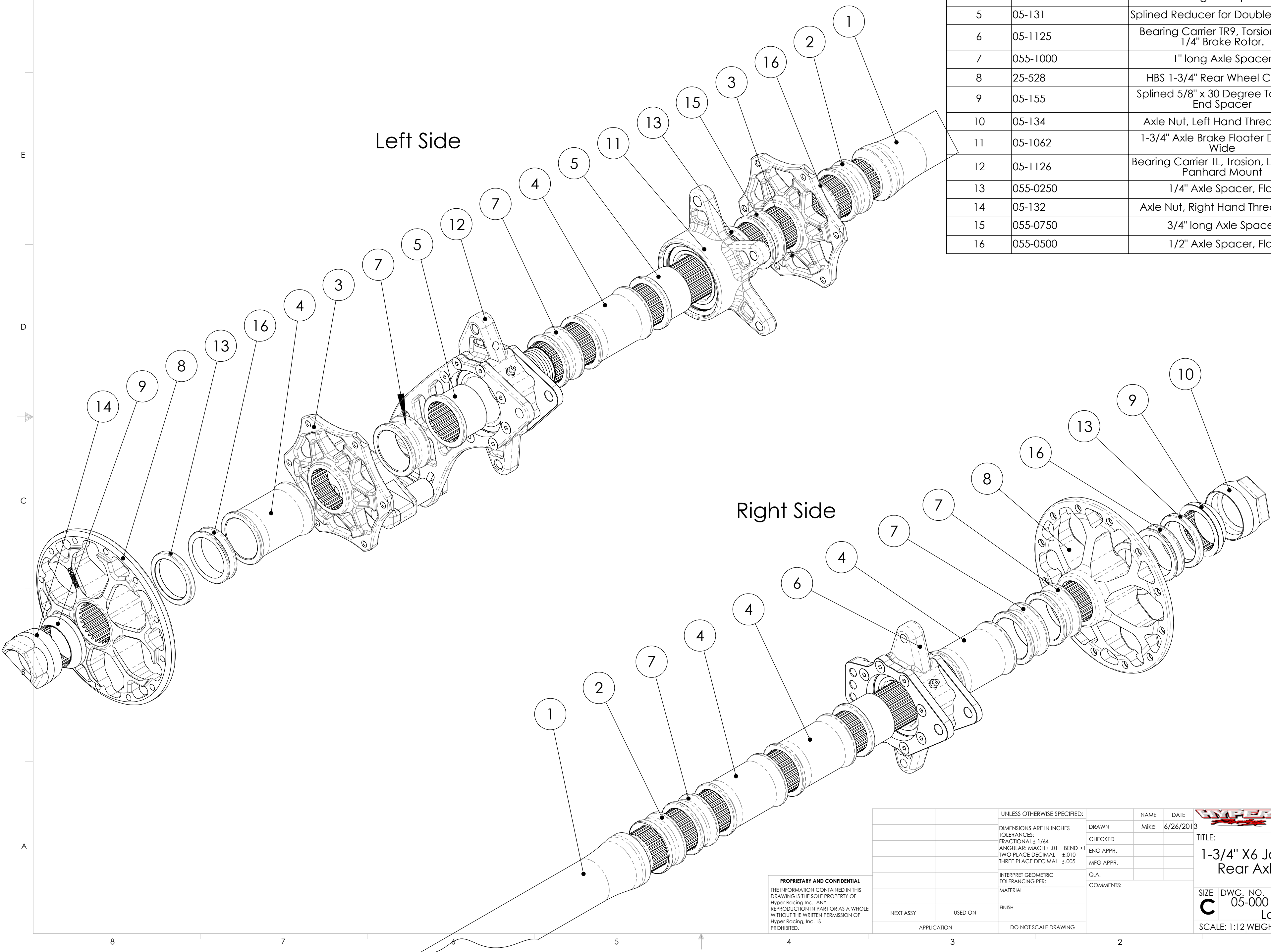


1-3/4" Rear Axle Assembly for X6 Jacob's Ladder Chassis


ITEM NO.	PART NUMBER	DESCRIPTION	QTY.
1	05-1015	1-3/4" x 53" Universal Axle	1
2	055-1001	Radiused Shoulder Axle Spacer, 1.00"	2
3	05-102	Splined Sprocket Carrier/6 Bolt Brake Rotor	2
4	055-3000	3" long Axle Spacer	5
5	05-131	Splined Reducer for Double Bearing	3
6	05-1125	Bearing Carrier TR9, Torsion for 9-1/4" Brake Rotor.	1
7	055-1000	1" long Axle Spacer	5
8	25-528	HBS 1-3/4" Rear Wheel Center	2
9	05-155	Splined 5/8" x 30 Degree Tapered End Spacer	2
10	05-134	Axle Nut, Left Hand Thread 1.9"	1
11	05-1062	1-3/4" Axle Brake Floater Double Wide	1
12	05-1126	Bearing Carrier TL, Trosion, Left Side, Panhard Mount	1
13	055-0250	1/4" Axle Spacer, Flat	3
14	05-132	Axle Nut, Right Hand Thread 1.9"	1
15	055-0750	3/4" long Axle Spacer	1
16	055-0500	1/2" Axle Spacer, Flat	4

Left Side

Right Side



PROPRIETARY AND CONFIDENTIAL
 THE INFORMATION CONTAINED IN THIS DRAWING IS THE SOLE PROPERTY OF Hyper Racing Inc. ANY REPRODUCTION IN PART OR AS A WHOLE WITHOUT THE WRITTEN PERMISSION OF Hyper Racing, Inc. IS PROHIBITED.

UNLESS OTHERWISE SPECIFIED:		NAME	DATE		Hyper Racing Inc. 580 Grandview Drive Lewisberry, PA 17339
DIMENSIONS ARE IN INCHES		Mike	6/26/2013		
TOLERANCES:		DRAWN		TITLE:	
FRACTIONAL ± 1/64		CHECKED		1-3/4" X6 Jacob's Ladder	
ANGULAR: MACH ± .01 BEND ± 1		ENG APPR.		Rear Axle Assembly	
TWO PLACE DECIMAL ± .010		MFG APPR.		SIZE DWG. NO. REV	
THREE PLACE DECIMAL ± .005		Q.A.		C 05-000 X6 Jacobs Ladder	
INTERPRET GEOMETRIC TOLERANCING PER:		COMMENTS:		SCALE: 1:12 WEIGHT: SHEET 1 OF 1	
MATERIAL					
FINISH					
NEXT ASSY	USED ON				
APPLICATION	DO NOT SCALE DRAWING				