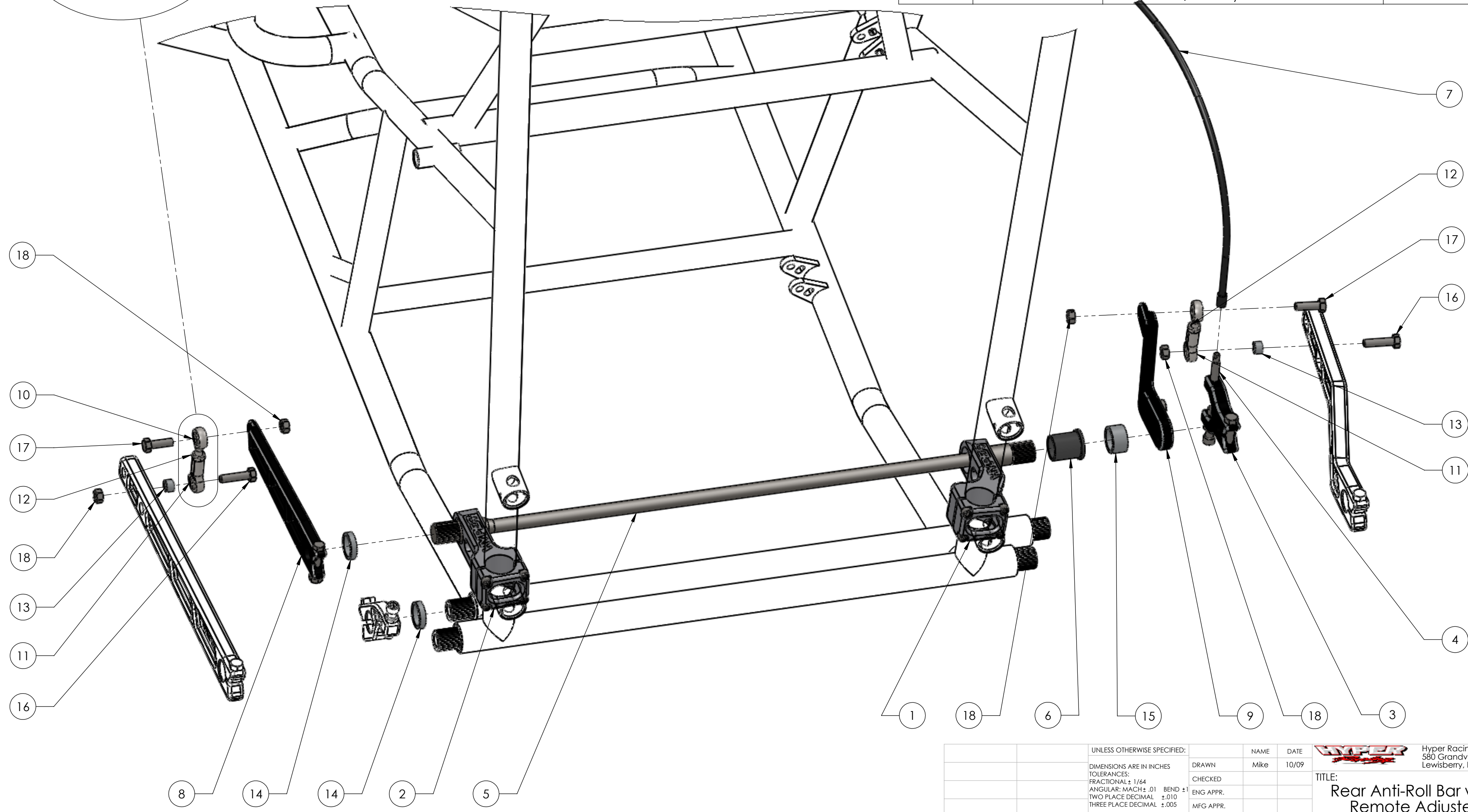


ITEM NO.	PART NUMBER	DESCRIPTION	04-705/QTY.
1	04-741 Assembly	Anti Roll Bar Clamp for Right Rear	1
2	04-740 Assembly	Anti Roll Bar Clamp for Left Rear	1
3	04-750 Assembly	Anti Roll Bar "U" Stop 7/8"	1
4	04-774	Remote Adjuster Bolt	1
5	40-0550	7/8" x 26" x .550 Solid Torsion Bar	1
6	40-226	7/8" Torsion Bar Bushing	2
7	38-460	48" Remote Adjustable Shock Cable	1
8	04-7515 Assembly	Non Splined Anti Roll Bar Arm for Left Rear	1
9	04-7521 Assembly	Anti Roll Bar Arm for Right Rear, Offset	1
10	71-CMR5	5/16" Male Right Hand Rod End	2
11	71-CFR5	5/16" Female Right Hand Rod End	2
12	70-315	5/16" Jam Nut	2
13	70-499	5/16 Rod End Spacer	2
14	04-776	Anti-Roll Bar Spacer 1/4"	2
15	04-775	Anti-Roll Bar Spacer 1/2"	1
16	971-05-24-1.125	5/16-24 x 1-1/8" Long HHCS	2
17	971-05-24-1.00	5/16-24 x 1.00 HHCS	2
18	977-05-24	5/16-24 Nylock Full Nut	4



PROPRIETARY AND CONFIDENTIAL
 THE INFORMATION CONTAINED IN THIS DRAWING IS THE SOLE PROPERTY OF Hyper Racing Inc. ANY REPRODUCTION IN PART OR AS A WHOLE WITHOUT THE WRITTEN PERMISSION OF Hyper Racing, Inc. IS PROHIBITED.

UNLESS OTHERWISE SPECIFIED:		NAME	DATE
DIMENSIONS ARE IN INCHES		Mike	10/09
TOLERANCES:		DRAWN	
FRACTIONAL ± 1/64		CHECKED	
ANGULAR: MACH ± .01 BEND ± 1		ENG APPR.	
TWO PLACE DECIMAL ± .010		MFG APPR.	
THREE PLACE DECIMAL ± .005		Q.A.	
INTERPRET GEOMETRIC TOLERANCING PER:		COMMENTS:	
MATERIAL			
FINISH			
NEXT ASSY	USED ON		
APPLICATION	DO NOT SCALE DRAWING		

Hyper Racing Inc.
 580 Grandview Drive
 Lewisberry, PA 17339

TITLE:
Rear Anti-Roll Bar with Remote Adjuster

SIZE DWG. NO. REV
C 04-705

SCALE: 1:3 WEIGHT: SHEET 1 OF 2

Make sure the anti-roll shackles are free to move and do not bind as the axle moves through the normal motions. You may need to bend the arms slightly to achieve. Check both the right rear and the left rear shackles.

In order to use our pre-bent right rear torsion arm and pre-bent anti roll bar arm, you may need to add spacers here.

Brake caliper will need to be spaced out 1/2". Also bearing carrier will need to be spaced out 1/2" more than normal.

PROPRIETARY AND CONFIDENTIAL
 THE INFORMATION CONTAINED IN THIS DRAWING IS THE SOLE PROPERTY OF <INSERT COMPANY NAME HERE>. ANY REPRODUCTION IN PART OR AS A WHOLE WITHOUT THE WRITTEN PERMISSION OF <INSERT COMPANY NAME HERE> IS PROHIBITED.

		UNLESS OTHERWISE SPECIFIED:	NAME	DATE	TITLE: Rear Anti Roll Bar Assembly SIZE DWG. NO. C 04-705 REV SCALE: 1:3 WEIGHT: SHEET 2 OF 2
		DIMENSIONS ARE IN INCHES	DRAWN	Mike	
		TOLERANCES:	CHECKED		
		FRACTIONAL ±	ENG APPR.		
		ANGULAR: MACH ± BEND ±	MFG APPR.		
		TWO PLACE DECIMAL ±	Q.A.		
		THREE PLACE DECIMAL ±	COMMENTS:		
NEXT ASSY	USED ON	FINISH			
APPLICATION		DO NOT SCALE DRAWING			